



UFED CLOUD ANALYZER

DELIVERING CLOUD DATA ACCESS AND INSIGHTS TO ACCELERATE INVESTIGATIONS

Cloud data sources represent a virtual goldmine of potential evidence for forensic investigators. Together with mobile device data, they often capture the details and critical connections investigators need to solve crimes. However, access remains a challenge. Roadblocks and red tape by cloud service providers add time and significant cost to investigations. UFED Cloud Analyzer provides forensic practitioners with timely extraction, preservation and analysis of private social media accounts - Facebook, Twitter, Kik, Instagram - file storage and other cloud-based account content that can help speed investigations.

Part of the UFED PRO Series, this unique and powerful investigative tool automatically collects both existing cloud data and metadata, and packages it in a forensically sound manner. Examiners can efficiently search, filter and sort data to quickly identify "Who? When? Where?" details to advance their investigations.

UFED CLOUD ANALYZER KEY FEATURES

Mobile-based extraction

Access private-user cloud data utilizing login information extracted from the mobile device.

Username-based extraction

Login to private-user cloud data using usernames and passwords provided by the investigated subject, retrieved from personal files, contacts or via other discovery means.

Forensic data preservation

Extract information from cloud data sources while logging and tracing the entire process to maintain data authenticity. Each piece of extracted data is hashed separately and can be later compared against its origin.

Visualize data in a unified format

Normalize different cloud services in a unified format and view in Timeline, File Thumbnails, Contacts or Maps format.

Report, share & export

Generate and share easy-to read, PDF reports for entire data sets or filtered information. Export extracted data to other analytical tools for deeper analysis and cross source investigation with third party data.

PERFORM TIMELY EXTRACTIONS OF PRIVATE USER DATA

By using login credentials extracted from a mobile device, examiners can extract private user cloud data from key social media, webmail and cloud storage sources, within preapproved legal boundaries. This provides forensics examiners with a useful workaround to obstacles posed by uncooperative service providers and speeds access to authentic data while waiting for lengthy legal processes such as the MLAT to go through.

UNIFY AND ORGANIZE DISPARATE DATA INTO A COMMON VIEW

Dynamically visualize and analyze large cloud data sets in a unified format to bring key insights to the surface for easy analysis. This unique capability enables forensic specialists to normalize and organize disparate data retrieved from various service providers into a unified format, to quickly uncover common connections and correlate critical evidence. Immediate access to private cloud-based data saves valuable time, offering a data source that can be validated against service provider records.

SHARE AND INTEGRATE DATA FOR FURTHER ANALYSIS

Sharing critical evidence or intelligence with supervisors, command leaders, attorneys and other outside parties has never been easier. Our solution ensures the data they receive is comprehensive, relevant and mission specific. Easily export and integrate UFED Cloud Analyzer data into UFED Link Analysis or other advanced analytical tools, for deeper analysis.

THE UFED CLOUD ANALYZER SIMPLIFIES THE INVESTIGATIVE WORKFLOW

Seize and extract mobile device

Decode cloud services login information using UFED Physical Analyzer

Extract private user data utilizing login information or credentials

Analyze and report data in a unified format

Share data and proceed with the investigation with UFED Link Analysis or other analytical tools



SOCIAL DEFINES MOBILE USE TODAY

With 58% of people using their mobile device to access social media*, a wealth of personal information is uploaded onto these social networks, reinforcing the need for UFED Cloud Analyzer to be part of every investigation.

* Adobe 2014 Mobile Consumer Survey Results

UFED CLOUD ANALYZER SYSTEM REQUIREMENTS

PC

Windows compatible PC with a dual-core or compatible processor running at 1.6 GHz or higher

Operating System

Windows 7 Service Pack 1, Windows 8, 64-bit or Windows 10, 64-bit

Memory (RAM)

Recommended: 16 GB Minimum: 8 GB

Space

90 MB of free disk space for installation

Additional Requirement

Microsoft.Net Framework version 4.5.2.

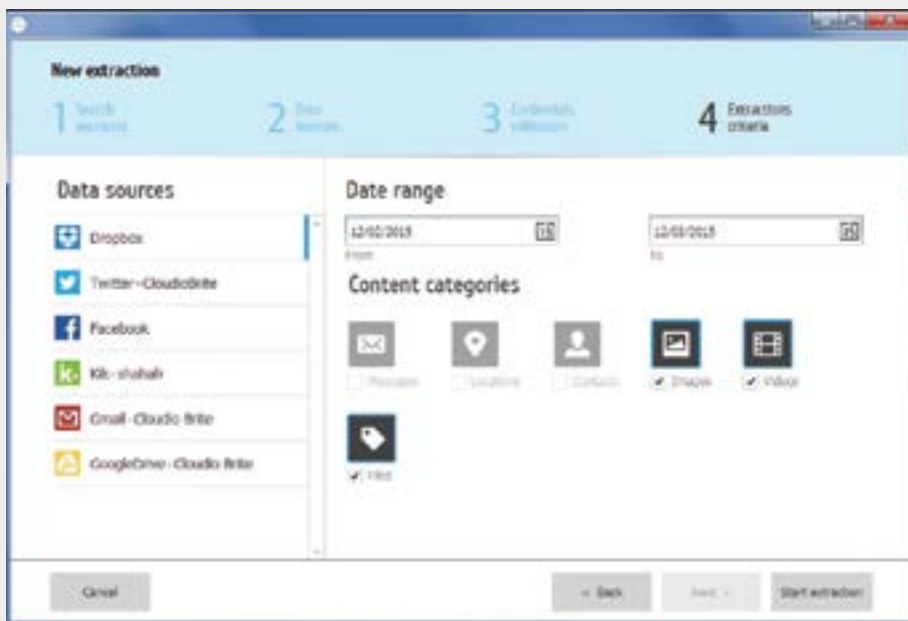
About Cellebrite

Cellebrite is the world leader in delivering cutting-edge mobile forensic solutions. Cellebrite provides flexible, field-proven and innovative cross-platform solutions for lab and field via its UFED Pro and UFED Field Series.

The company's comprehensive Universal Forensic Extraction Device (UFED) is designed to meet the challenges of unveiling the massive amount of data stored in the modern mobile device. The UFED Series is able to extract, decode, analyze and report data from thousands of mobile devices, including, smartphones, legacy and feature phones, portable GPS devices, tablets, memory cards and phones manufactured with Chinese chipsets. With more than 30,000 units deployed across 100 countries, UFED Series is the primary choice for forensic specialists in law enforcement, military, intelligence, corporate security and eDiscovery.

Founded in 1999, Cellebrite is a subsidiary of the Sun Corporation, a publicly traded Japanese company (6736/JQ)

To learn more, visit
www.cellebrite.com
sales@cellebrite.com



© 2015 Cellebrite Mobile Synchronization LTD. All rights reserved.